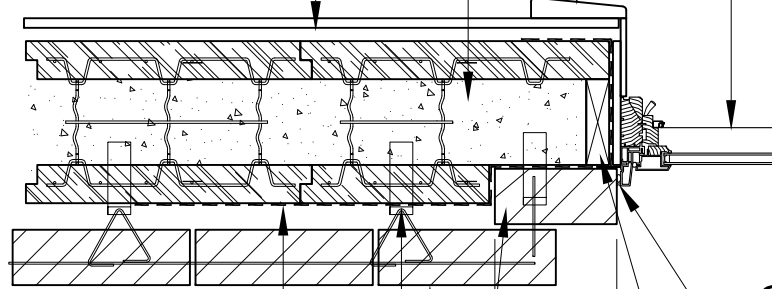


WOOD FRAMED DOUBLED GLAZED LOW-E CASEMENT WINDOW (SHGC 0.48, U-FACTOR 0.45 MIN)

WOOD TRIM

POLYCRETE 6" ICF (TYP)

5/8" FIRE CODE "C" GYP BOARD  
OVER 7/8" FURRING STRIP



THRU-WALL FLASHING AND / OR  
(AQUAFLASH OR APPROVED EQUAL)  
AROUND ENTIRE PERIMETER OF WINDOW  
OPENING

EMBEDDED ADJUSTABLE MASONRY  
TIES EVERY 48" o.c. HOR. MAX, AND  
EVERY 16" o.c. VERT. MAX

4" ROMAN FACE BRICK

COMPATIBLE SEALANT  
AND BACKER ROD (TYP)

GROUND PRESSURE  
TREATED WOOD  
BLOCKING (UC4B)  
AROUND PERIMETER OF  
WINDOW OPENING AS PER  
POLY-CRETE  
RECOMMENDATIONS